



Houlihan Lokey

Portfolio Valuation and Fund Advisory Services

# Growth Equity Valuation U.S. Snapshot

MARKET UPDATE **SUMMER 2022**



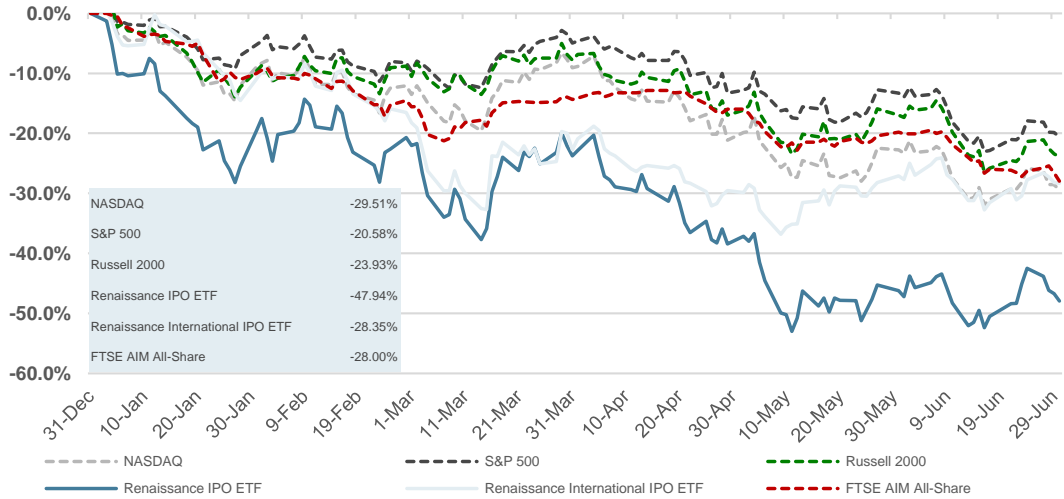
# Houlihan Lokey's Growth Equity Valuation Snapshot

## Summer 2022

Houlihan Lokey is pleased to present a summary of U.S. growth equity observations from its valuation professionals based on real-time market and valuation insights.

1

### Benchmark Performance Since 2021

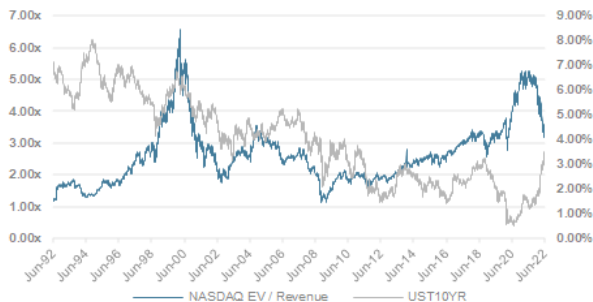


2

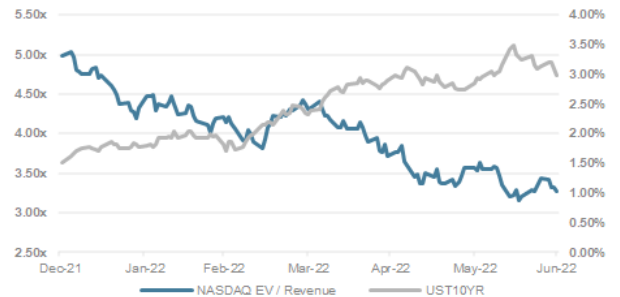
### Multiple Compression

- Since 2020, the nation's money supply has increased 42% and the Federal Reserve's balance sheet has increased from \$4.2 trillion to \$8.9 trillion. Similarly, after a series of cuts, the Federal Funds Rate was 0.25% at the onset of the pandemic and gradually increased to 1.75% at the end of June 2022.
- Over the same period from 2020 to June 2022, the U.S. 10-Year Treasury yield dropped to an unprecedented 0.52%, ended 2021 at 1.52%, then rose to 2.98% at the end of June 2022, or almost doubled. By comparison, the EV/Revenue multiple of the NASDAQ Composite Index spiked at 5.28x in 2021, ending the year at 4.98x, then fell 34% to 3.28x at the end of June 2022.
- Investments in growth-oriented businesses or those with long-term cash flow potential run the risk of increasing interest rates, as profitability may be years away. Generally speaking, discounting a longer-dated stream of cash flows at a higher discount rate can materially impact valuation multiples.

#### 20 Year: Nasdaq EV/Revenue vs UST10yr



#### YTD June 2022: Nasdaq EV/Revenue vs UST10yr



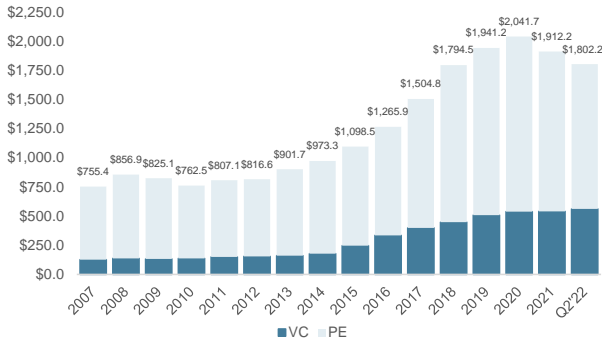
Note: EV refers to Enterprise Value.  
Source: Capital IQ.

# Houlihan Lokey's Growth Equity Valuation Snapshot

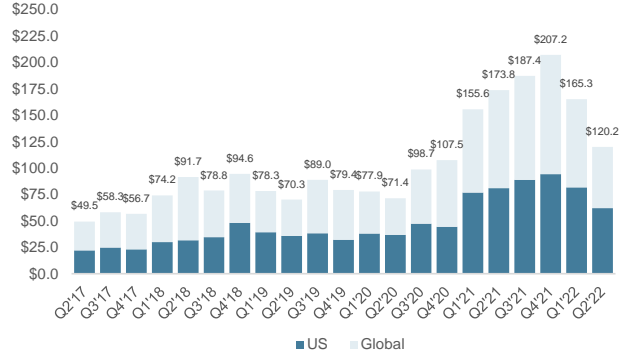
Summer 2022

## 3 Funding Reports

### Global Dry Powder (\$B)



### Venture Financing (\$B)



Sources: PitchBook, KPMG Venture Pulse Q2 2022.

## 4 NAV Support and Valuation Considerations

### Downside Protection

- Understanding the various terms and features attached to each security class in a company's capital structure is essential to security valuation. Seniority, liquidation preferences, dividends, ratchets, conversion ratios, and other variables are highly impactful economic features that provide downside protection.
- Common best-practice private valuation methods include valuing stock on a common stock equivalent, or as-converted basis (the typical post-money valuation method observed in public press releases) and a waterfall basis (which can also apply option pricing methodology). The two methods often produce materially different results, which is why it is important to understand the various downside protections and equity distribution waterfall. If an asset is materially impaired or has underperformed since last-round valuation (LRV), the waterfall approach will often reflect higher security values for senior classes vs. junior classes due to the downside protections. For instance, current per share valuations of prior secondary purchases of junior shares at primary round prices (a common occurrence in 2021) will often diverge from that of senior primary classes due to the seniority and waterfall features.
- Additionally, expectations around IPO vs. M&A may have shifted due to current macro environment concerns so common stock equivalent approaches may not be as appropriate as they were at LRV.

### Performance: Portfolio Company vs. Market

- Calibrating against representative metrics at LRV can be helpful for valuation support: What is the portfolio company's over/underperformance vs. underwriting forecasts? Did the portfolio company beat its budget?; How have the unit economics changed since LRV?; How does the portfolio company's YTD YoY growth benchmark against public comparable companies?
- Public comparable companies can be highly informative in making market-based valuation adjustments. However, there may not be a 1:1 correlation with private company valuations. Have public comparable companies' enterprise or market values deteriorated since LRV? Are certain public companies more comparable than others due to end customers, end markets, or country of operations? How does the portfolio company benchmark against growth, margin, and size to the overall public comparable set?
- It is critical to assess cash runway and burn in bear markets. Will the portfolio company need to raise additional capital at unfavorable terms in the near term?

### Income Approach


- Utilizing a discounted cash flow analysis with updated forecasts (reflective of current macro and inflationary expectations) and revised weighted average cost of capital (WACC) assumptions can be considered to corroborate portfolio company value.


### Secondary Transactions

- Recent secondary transactions may also be weighed in valuation, with particular consideration on price, size, security class, recency, and circumstances pertaining to the buyer(s) and/or seller(s).


# Houlihan Lokey's Growth Equity Expertise

Houlihan Lokey has a successful track record and robust experience in assisting its clients—including private equity, venture capital, hedge fund, and family office—with ongoing portfolio valuation work and fund-related transactions.


 We have deep **valuation expertise** in investment, NAV reporting, and fund-related transaction matters.


 We advise **boards of directors and valuation committees** as they navigate audit review, regulatory challenges, and new fund formations, including valuation policy and procedures.

 We value large portfolios of **highly structured, venture-backed “unicorn”** investments for various investors across the globe.

 Our industry-leading Fund Opinions practice provides valuation and fairness opinions to many **financial sponsors** annually in connection with cross-fund, spin-out, and other conflict-of-interest transactions.

 Our Capital Markets team has **substantive private placement experience in structuring and raising capital** with leading industry participants in growth and structured equity.

 Our valuation practice has deep technical expertise and market presence across various industries and asset classes. This is further enhanced with access to **the firm's dedicated industry groups in the investment banking practice**, which provides an unmatched level of expertise and transaction experience to inform the valuation process.

 Please reach out to the team below for more information.



**Terence Tchen**  
Senior Advisor  
310.788.5235  
[TTchen@HL.com](mailto:TTchen@HL.com)



**Ian Coffman**  
Senior Vice President  
415.273.3658  
[ICoffman@HL.com](mailto:ICoffman@HL.com)



**Michael Chiu**  
Vice President  
415.273.3638  
[MChiu@HL.com](mailto:MChiu@HL.com)



# Disclaimer

---

© 2022 Houlihan Lokey. All rights reserved. This material may not be reproduced in any format by any means or redistributed without the prior written consent of Houlihan Lokey.

Houlihan Lokey is a trade name for Houlihan Lokey, Inc., and its subsidiaries and affiliates, which include the following licensed (or, in the case of Singapore, exempt) entities: in (i) the United States: Houlihan Lokey Capital, Inc., and Houlihan Lokey Advisors, LLC, each an SEC-registered broker-dealer and member of FINRA ([www.finra.org](http://www.finra.org)) and SIPC ([www.sipc.org](http://www.sipc.org)) (investment banking services); (ii) Europe: Houlihan Lokey EMEA, LLP, Houlihan Lokey (Corporate Finance) Limited, and Houlihan Lokey UK Limited, authorized and regulated by the U.K. Financial Conduct Authority; Houlihan Lokey (Europe) GmbH, authorized and regulated by the German Federal Financial Supervisory Authority (Bundesanstalt für Finanzdienstleistungsaufsicht); (iii) the United Arab Emirates, Dubai International Financial Centre (Dubai): Houlihan Lokey (MEA Financial Advisory) Limited, regulated by the Dubai Financial Services Authority for the provision of advising on financial products, arranging deals in investments, and arranging credit and advising on credit to professional clients only; (iv) Singapore: Houlihan Lokey (Singapore) Private Limited and Houlihan Lokey Advisers Singapore Private Limited, each an “exempt corporate finance adviser” able to provide exempt corporate finance advisory services to accredited investors only; (v) Hong Kong SAR: Houlihan Lokey (China) Limited, licensed in Hong Kong by the Securities and Futures Commission to conduct Type 1, 4, and 6 regulated activities to professional investors only; (vi) India: Houlihan Lokey Advisory (India) Private Limited, registered as an investment adviser with the Securities and Exchange Board of India (registration number INA000001217); and (vii) Australia: Houlihan Lokey (Australia) Pty Limited (ABN 74 601 825 227), a company incorporated in Australia and licensed by the [Australian Securities and Investments Commission](#) (AFSL number 474953) in respect of financial services provided to wholesale clients only. In the United Kingdom, European Economic Area (EEA), Dubai, Singapore, Hong Kong, India, and Australia, this communication is directed to intended recipients, including actual or potential professional clients (UK, EEA, and Dubai), accredited investors (Singapore), professional investors (Hong Kong), and wholesale clients (Australia), respectively. Other persons, such as retail clients, are NOT the intended recipients of our communications or services and should not act upon this communication.

Houlihan Lokey gathers its data from sources it considers reliable; however, it does not guarantee the accuracy or completeness of the information provided within this presentation. The material presented reflects information known to the authors at the time this presentation was written, and this information is subject to change. Houlihan Lokey makes no representations or warranties, expressed or implied, regarding the accuracy of this material. The views expressed in this material accurately reflect the personal views of the authors regarding the subject securities and issuers and do not necessarily coincide with those of Houlihan Lokey. Officers, directors, and partners in the Houlihan Lokey group of companies may have positions in the securities of the companies discussed. This presentation does not constitute advice or a recommendation, offer, or solicitation with respect to the securities of any company discussed herein, is not intended to provide information upon which to base an investment decision, and should not be construed as such. Houlihan Lokey or its affiliates may from time to time provide investment banking or related services to these companies. Like all Houlihan Lokey employees, the authors of this presentation receive compensation that is affected by overall firm profitability.



**Houlihan Lokey**

Corporate Finance  
Financial Restructuring  
Financial and Valuation Advisory

[HL.com](http://HL.com)